



# St Anne's Catholic School & Sixth Form College

Newsletter 1—December 2015



## St Anne's is in the Top 1%!



Dear Parents,

We received the excellent news that the school is in the top 1% of schools nationally with the release of the Government's analysis of the 2015 results in RAISEonline. This means that students at St Anne's make the best progress in the country.

We were extremely pleased with our results in the summer and hoped for good news when our girls' achievements were compared with other students across the country. The news that we are in the top 1% of schools is wonderful and a great tribute to the Staff, Students, Parents and Governors of the St Anne's school community. Our staff are exceptional, encouraging our girls to achieve even more than they thought possible and preparing them for a successful life ahead. I am very proud of the way our girls make the most of every opportunity and have a love for learning. Their positive attitude, commitment, diligence and enthusiasm mean they achieve such astounding results. Congratulations to everyone involved in this truly exceptional achievement.

Through sheer hard work and resilience girls of all levels of ability achieved success across the curriculum. I would like to share with you some of the details provided by the Department for Education. The DFE measure the progress pupils make between Year 6 and Year 11 using a 'Value

Added' score. A Value Added score of 1000 is the national average. Scores below 1000 mean pupils are making less progress than average. Scores above 1000 mean pupils are making more progress than the national average. The progress our pupils made in their best 8 subjects was an exceptional **1050.3**.

The national average 'Value Added' score for disadvantaged pupils it is 975, for pupils with a special educational needs (SEN) 972 and for the most able pupils, 999. Pupils at St Anne's in each of these groups have excelled. Our disadvantaged pupils made much more progress than both disadvantaged and non-disadvantaged pupils nationally with a score of **1047** and our pupils with special educational needs achieved **1037**, which is again much higher than the achievement of pupils either with or without special educational needs nationally. It is arguably very difficult for our most able pupils to make exceptional progress as their achievement in Year 6 is already high, but St Anne's girls achieved an excellent score of **1032**, far exceeding the national score of 999. When compared to the score for girls nationally the positive impact of single sex education is clear: our girls achieved **1050.3** compared to 1009 nationally.

The detail of the RAISEonline report tells even more success stories about the progress pupils make at St Anne's. The English results have reached the **top 3%**, Humanities the **top 2%** and Languages the **top 6%**. Maths results have moved up to the **top 11%** of schools and Science results are in the **top 12%**. Although we are very pleased with these achievements, we know there are always improvements to be made and we will continue to look for ways to give our girls the very best education we are able to provide, giving them an excellent foundation on which to build successful futures. If you would like to discuss this or any other achievement data in more detail, or have any questions about what this means, please feel free to get in touch.

We will be celebrating our success together on Friday 18<sup>th</sup> December with the collection of our Charity Christmas Hampers, Celebration Assemblies and Liturgies to prepare us all for Christmas. Year 12 students, the girls who achieved these excellent results, will have a special celebration after their January exams. Everyone in the school community is invited to relax our dress code on Friday for a 'Christmas Jumper and Jeans Day' day which will help us to create a special atmosphere. Guidelines for the day can be found in the letter to parents sent on Friday 11<sup>th</sup> December (a copy is available for reference on the website).

I would like to take this opportunity to wish all members of our school community a very happy Christmas as we look forward together to the opportunities 2016 will bring. May the joy and peace of Christmas be with you always.

Lyn Bourne, Headmistress

## Do you know anyone who would like to join us?

If you know of any girls 11 - 16 who would like to join us at St Anne's we do have a few places available. Please ask their families to contact the school on 023 8032 8200.

Applications for a place in the Sixth Form in September 2016 are welcome. Please complete the form on our website.

# Christmas

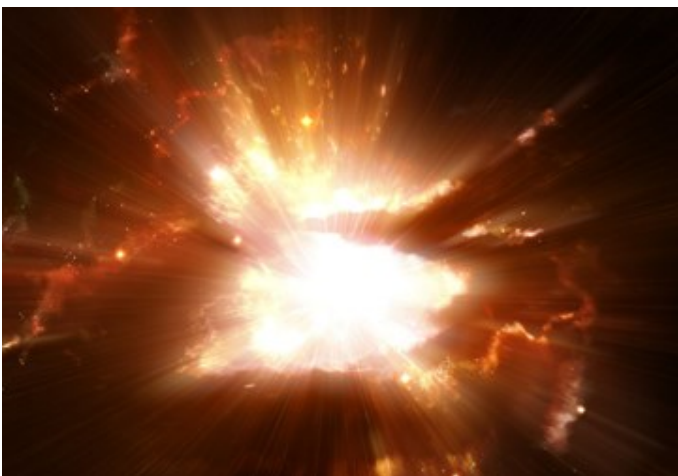
Christmas celebrations, of course, can get lost in the hubbub of family life, which is only right and proper as God becoming a human - the Incarnation - is a celebration of family, of real life and of giving. But, like puppies, the Incarnation is not just for Christmas. The joy of the Christ-child should infuse our prayers because the reality of God's nearness to us is emphasised at Christmas. It should infuse our actions because of the emphasis in the Christmas story of the good news coming to everyone. It is an encouragement of strength and hope when we need it and gives context to our joy.

Over the course of this term, the moment of the Incarnation has been present to the St Anne's community in so many ways - in the daily prayers our students experience in tutor time or assemblies, in the wonderful ways young people and adults interact with each other, in our reflection days, our charitable giving: the list goes on.

For me, two sets of events have stood out. Our year group Masses for Years 7 to 9 have been moments when the community has gathered around the altar and prayed together as God has become present in a special way at the Eucharist - an Incarnation moment. The other events have been the silences we kept both for Remembrance Day and for those affected by the attacks in Paris. Uniting with people from all over, we have recognised the broken world's need for these Incarnation moments.

May I take this opportunity to wish you all a happy and holy Christmas and God's blessings at the start of the New Year.

Mr Waterfield, Head of RE





## R.E. Department

### Year 8 Reflection Day

The morning of Monday 16<sup>th</sup> November saw Year 8 'Go Deeper' in thinking about themselves, the St Anne's community and how we relate to the world. Team building games in tutor groups helped them to get to know each other better and work collaboratively to make a tutor group jigsaw. Using resources from CAFOD, the year group experienced what it is like to be a refugee making difficult decisions about their lives and possessions. Collaborative and creative learning really took place and the girls responded thoughtfully and enthusiastically. The liturgy at the end of the morning focussed on us being lights to the world, bringing hope and comfort to others. This was the weekend after the tragedy in Paris and the girls were reflective and compassionate in their responses. Well done Year 8.



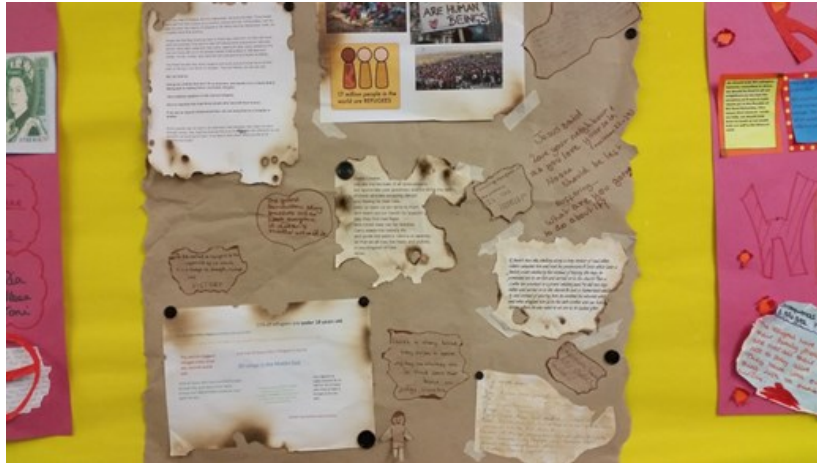
### Year 9 Reflection Day

On Monday 16<sup>th</sup> November Year 9 enjoyed an afternoon getting to know themselves and those around them a bit better with a half day of reflection on the theme, 'Free to be Me'. The afternoon consisted of exploring the perceptions others have of us and acknowledging the masks we put up in the different areas of our lives. We later heard about the way God made us based upon Psalm 139. Verse 14 particularly stood out, "You are fearfully and wonderfully made." The afternoon helped us to look beyond ourselves and how we can help others in the world be who they were made to be. We also enjoyed time with our tutor groups thinking about the type tutor of group we would like to be. Thank you, Year 9 for a superb day.



## Year 7

Year 7 have been exploring the values and ethos of St Anne's this term. 7 Beech considered how the parable of the Good Samaritan could be applied to the refugee crisis and produced the posters below



Some students also created some interesting similes to sum up their first term's impressions of St Anne's!

- If St Anne's was an animal, it would be a meercat because they are kind and caring and stick together as one.
- If St Anne's was a sound, it would be a river because it can be calm and peaceful but it can also be raging and loud!
- If St Anne's was a colour, it would be a rainbow to show we support diversity.
- If St Anne's was a sound, it would be a harmonious tune as all the notes fit together; this is like students and teachers – all the same and getting along.

## Sixth Form

Both Year 12 and 13 have been demonstrating their understanding of challenging philosophical and ethical concepts; how would you express Aristotle's view of reality or enlightened shallow ecology?



## Charities

### St Anne's Founders' Day

Our Founders' Day celebrations each year are combined with CAFOD's Harvest Fast Day and this year the theme was 'Brighten up the harvest'. Staff and students all got into the spirit of things and wore something bright to remember that we can play a part, however far away we are, in making life a little brighter for those for whom harvest is a nervous time of year. You can see some of the staff dressing up in the link on the right.



The money that we raised has been split three ways this year. Firstly, we have sent a donation to the LSU sisters in Tanzania who have paired us up with a Day Centre that gives support and respite to families with disabled children, run by the sisters there. Look for the bright Matumaini display in the entrance corridor at school! We have also donated money to supporting sanitation in areas that most need it and have 'twinned' our main toilet with a toilet block in Chad. The remaining money goes to support the work of CAFOD as always.

Thank you to those families who took the opportunity of paying online to be generous with your donations for the non-uniform day.

### House Charities

Our house captains each nominate a local charity to support through their own charity events in the year. Apart from being a wonderful experience of leadership for our Sixth Form, these events are a great way of getting everyone in the house involved with a common purpose. The events are spread throughout the year and Alban, Becket, Bede and Gregory have been hard at work supporting the work of Autism Hampshire, The Rainbow Centre, Youth Cancer Trust and Isaac's Gift.

### World's Biggest Coffee Morning

Staff and Sixth Form joined together to bake, bring and buy cakes to share in this wonderful event for Macmillan. The weather held out for us and it was a lovely break in the day for such an important cause.





## Refugee Crisis

Once more the St Anne's community responded with real love and generosity to the unfolding situation with Syrian refugees. Not only were people generous with donations of items and in our bucket collection and supporting a DVD sale, but also with taking time to raise awareness and to pray. The Oasis room was transformed for two lunchtimes for prayer specifically for refugees. Years 7 and 8 have also been able to take part in a refugee simulation which I know touched many of them.



Charitable giving is not just about giving of our treasures, although we are delighted to be closing in on £2000 this year already! It is about the time and talents that we also give and the generosity shown at school this year has been wonderful. As I write we are collecting for our Christmas hampers and looking forward to tutor group charity events during Lent. The tangible blessings that we send to others really does show us being Christ's hands on earth.

Mr Waterfield, Head of RE

## Romania

Participating in the Libra Foundation Charity has given us the opportunity to fundraise and volunteer in Romania. It was a rewarding experience as we learnt life skills that would help us greatly in the future such as, problem solving, independence skills and being able to adapt to challenging situations. In preparation for the trip, we had to fundraise: at school we held a Krispy Kreme sale as well as a car wash. Independently, among other things, we attended numerous bag-packing sessions at the local super markets.

All of the children in residential care are youngsters who live in the centre due to cognitive disorders, speech, and language and communication difficulties; ADHD; challenging behaviours and there are some on the autistic spectrum. Many of the children had multiple disorders.

While in Romania we had a daily theme, for example "Under the sea", where we had to recreate the sea to make a tactile and visually stimulating welcome for the children. We planned an activity where the children had to make their own sea creatures using stencils that we had made. This all came together in a collage. It turned out the imagination and diligence of the students was such that we had to think on our feet! So we decided to combine the two originally planned tasks - hats off to our teachers who do this all the time! So we ended up getting them to choose a sea creature to model in plasticine, which used an even wider range of skills.



These activities were leading towards a grand finale called "Bradettifest" where we combined all of the themes of the 2 weeks. The children could show their work and celebrate their accomplishments. There was food, drink, music and many different stalls of activities all of which the children enjoyed thoroughly and we as volunteers could recognise the progress that the children and we personally had made.

Our first impression of the "cabanas" (the communal living quarters) was not the best, but it soon became a home from home. Fellow volunteers became "ohana" (family), and we got to experience the local lifestyle in the extent to which amenities were shared. Our rooms didn't have locks which gave a homelike atmosphere and there was a communal area in the centre, which helped with socializing and getting to know each other - the fridge and plugs were also a bonus!

Overall we are looking forward to going back next year! We are sure that everyone will be as welcoming as they were the first time. There were smiles, laughter and tears and it will be an experience we remember. It was a wonderful journey that enabled us to get out of our comfort zones but was so rewarding and heartwarming! Many memories!

Abi Hatton, Florence Japzon, Macey McCormack, Eva Rahman





## Alumni Update

St Anne's Alumni are seeking all old pupils who took their O Levels or CSE exams in the summer of 1982 and those who took their A levels in the summer of 1984.

A 'Class of '82' school reunion is planned on **Saturday 19 March 2016 between 2pm and 5pm at St Anne's Catholic School Southampton.**

If you would like to catch up with old class mates or perhaps you just fancy a chance to poke around your old school then please save the date in your diary.

To register interest in the event or for further information go to Facebook page

**<https://www.facebook.com/StAnnesclassof82>**

Or email us on

**[Saintannes1982@gmail.com](mailto:Saintannes1982@gmail.com)**

**For further information and images please contact:**

Kate Prince

[princekate@aol.com](mailto:princekate@aol.com)

# MFL

Dear Parents,

GCSE examinations and courses for French and Spanish are changing. This change will affect all pupils who are currently in Year 9 and below and who choose to do a GCSE in French or Spanish when they choose their options. Changes are also occurring for other languages.

The new GCSE is much more practical and expects pupils to have a wide vocabulary from memory. Pupils will be expected to be able to remember a lot of vocabulary and grammatical structures for their writing exam (this will replace controlled assessments) and speaking tests (this will be an unprepared conversation which replaces the current controlled assessments.) Pupils will also need to be able to translate sentences and paragraphs from English to French/Spanish and from French/Spanish into English.

In order to prepare pupils for these changes we have made some changes to our KS3 (Year 7-9) curriculum. The content has remained very similar to previous years as we feel this gives pupils a good foundation for GCSE. The changes we have made are as follows:

- More teaching of phonics
- More teaching and practice of group talk and spontaneous talk
- Introduction of transcription
- Introduction of simple translation activities
- Increased use of poetry and literature from the country
- More frequent testing of vocabulary and grammar

Lessons are taught in blocks of five. In each block pupils will sit

- 1 vocabulary and grammar test
- 1 transcription (listening) and translation test.

If pupils need more time, teaching will be adapted accordingly. Pupils are given the vocabulary lists in advance and their homework task is to learn this vocabulary carefully and to try to use it in their written work and speaking activities. This is set in accordance with the homework timetable.

At the end of each module (there are 4 modules per year) pupils sit a comprehensive reading and listening test. They will also be tested on either speaking or writing.

The marks are recorded in their assessment books and these will go home to parents at the end of each module and tests. In the assessment books you will find;

- A summary of vocabulary and grammar test marks
- A summary of transcription and translation test marks

An indication of pupil progress for all four skills (listening/speaking/reading and writing.) Typically, pupils achieve higher marks in the receptive skills (listening and reading) and they develop their writing and speaking more slowly. We hope that you and your daughter will find this information useful.

We believe that it is important to encourage a growth mindset (a positive can-do attitude) and we would encourage you to speak to your daughter about her learning journey, and what she can do to keep on moving forwards and the link between home learning and progress in the classroom. We know that pupils who learn their vocabulary thoroughly do well in their end of module tests.

The feedback from pupils so far has been positive. We will be seeking pupil and parent opinion on the clarity of information, the frequency of assessment, the impact on learning and pupils' readiness for GCSE in 2016.

We thank you for your support.

If you have any questions please do not hesitate to contact your daughter's French/Spanish teacher in the first instance.

Ms Emma Wright

Head of MFL

ewright@st-annes.uk.com

### **Websites to support language learning**

Here in the MFL department we are keen to make language learning fun, rigorous and relevant.

Here are some websites which we use in class and for homework tasks to support language learning.

[www.duolingo.com](http://www.duolingo.com) A free website which comes with an app which takes pupils from the very beginning to beyond GCSE level.

[www.linguascope.com](http://www.linguascope.com) Username: saintanne, Password: Hampshire. This website focuses on vocabulary and is suitable for Year 7 to 11 with a range of engaging activities.

[www.samlearning.com](http://www.samlearning.com) Samlearning has activities for most subjects at school. Your daughter will have her own username and log-in and pupils may be set homework tasks from the site.

### **French Exchange 2015-2016 for Year 8 pupils**

Following on from a series of successful exchanges, I am very pleased to be able to tell you about a forthcoming visit from a class from our partner school in Le Havre, France. We have worked closely with this school for 6 years and have run a number of successful trips with Year 8 and 6<sup>th</sup> form students. The school is a Catholic school with the same values and principles as our own. 30 pupils (6 boys and 24 girls) aged between 12 and 13 years will be coming from France to experience a few days in England and to improve their comprehension and spoken English.

This is an excellent opportunity for pupils from St Anne's to welcome a young French person into their home and help them to experience a little bit of English life.

**The dates for the exchange in England are: 25<sup>th</sup>-31<sup>st</sup> January 2016**

**The dates for the exchange in France are: 20<sup>th</sup>-26<sup>th</sup> June 2016**

We hope that you will join in making our guests welcome and share in our excitement as we prepare for their visit.

**Ms Wright and the MFL department.**



## P.E. Department

### Cross country 2015

The cross country girls have given brilliant performances so far this season in the city league. For the first time in many years, St Anne's are out in strong force representing some true girl power!

The new Year 7's this year have come in fighting, with an exceptionally strong team. They currently lie in 1<sup>st</sup> place as a team, with fantastic individual positioning's from Fae Thompson currently 1<sup>st</sup> overall girl and Abigail Hadley 3<sup>rd</sup> overall girl. A fantastic start to the league girls and I think there will be some exciting prospects ahead throughout the cross country season and into the athletics season.

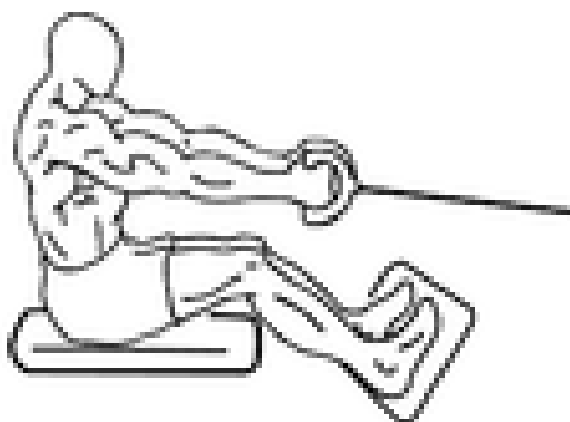
The Junior girls are shining this season also currently in 1<sup>st</sup> team position. Our two superstar Year 8's Olivia Reavey currently in 2<sup>nd</sup> individual place, closely followed by Margot Broome in 3<sup>rd</sup> are a credit to the lower end of the junior team and are going from strength to strength race by race. I am exceptionally proud of the Year 9 girls in the junior team who have really committed themselves and got stuck in to the cross country this season, they demonstrate true team spirit to race for one another and keep a united strong team. If a team member is unable to race, another will always be ready to step up and help out, so I give special thanks to all those Year 9 - girls you all know who you are! To currently be in first place as a team is truly deserved, well done.

And finally onto the Intermediates, always a tough time with lots going on in regards to exams, yet despite the extra work our Inters are committing themselves. Freya Anderson Year 11 is in every race, getting into her stride this year and currently holding herself as 3<sup>rd</sup> overall individual, alongside her determined team mates currently keeping them in 2<sup>nd</sup> team position.

So a huge well done so far this season girls, keep up the hard work and training and I think you will get the results you all deserve in March.

### Rowing

The annual whole school virtual rowing competition trials have just been completed and the final scores are being sorted to take the top 4 scorers from each year group to go through to the Hampshire schools semi-final trials held at Barton Peveril on December 14<sup>th</sup>. Last year we were very successful having 4 girls qualify through to represent Hampshire in the regional finals so we are hoping to see the same success again this year. Watch this space.....



# English Department

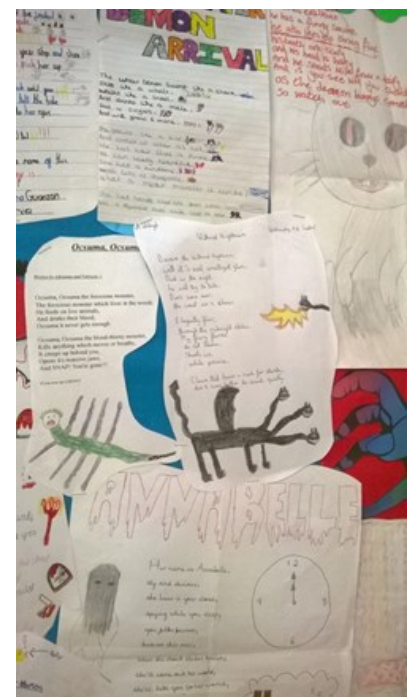
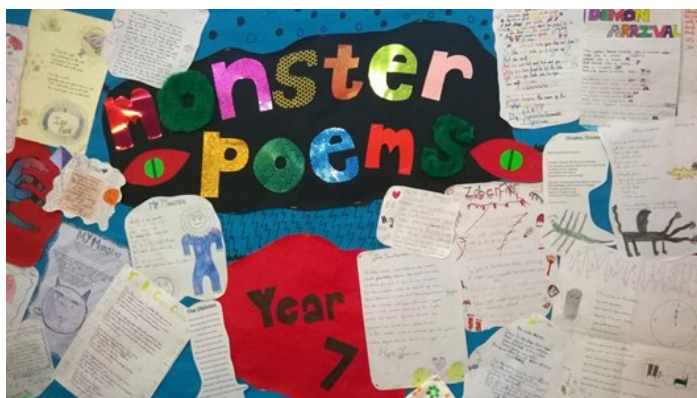
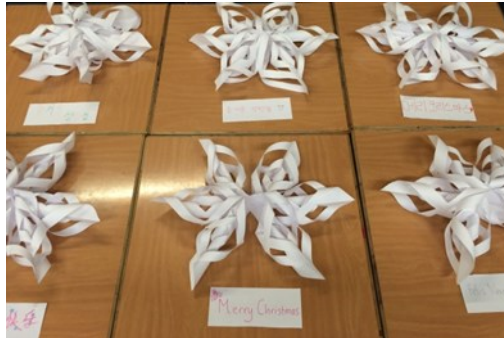
## Creative Conversation Club

This new venture encourages early stage EAL students to practise their English while making these amazing crafts. If you haven't tried this out yet why not come along?

The club runs every Monday from 3.30-4.15 in the English room.

Miss

Kardasinski



In English, Year 7 used their poetry skills to create monster poems all about their different fears. From cheese monsters to three headed beasts, a whole range of interesting and exciting poems were produced (as well as being very scary at times!). The display can be found in Room 7 with examples from 7 Rowan and 7 Sycamore. If only the board was big enough to include everyone's poems!







Year 10 have been polishing their creative writing skills with a focus on using figurative language. Take a look at these list poems - I hope you enjoy them as much as I did.

### **Mimi**

She is as welcoming and kind as a hot chocolate on a cold day.  
She is comforting and has hair like a sheep.  
She is as sweet and bright as a green grape.  
She is as bright and fun as the city where we first met; Brighton.  
She is as interesting and adorable as the lanes of Brighton.  
Her words are as comforting and warm as a jumper.  
As kind and gentle as a violin.  
As consoling and reassuring as cashmere.  
She is as precious as a piece of art.  
She is empathy and kindness.

**Fidelma O'Riordan**

Her hair is strawberry blonde.  
She is a mischievous cat that sneaks up on you silently.  
Placed in the bright lights of London she would fit in.  
Her energy is as high and addictive as coffee.  
She is purple.  
She is a warm, fluffy jumper, and a flower within a meadow.  
She is a comfortable bed on a winter's night.  
An ocean breeze on a summer's day.  
She is as sweet as sugar.

**Annabel Chapman**

Year 8 have been studying 'A Midsummer Night's Dream'. In this piece, Oliwia imagines she is Oberon chastising Titania for not giving him the changeling boy.

Furiously raging, there is a war going on inside me. I can't keep calm or control myself; the severe swelling of my veins and the rapid rushing of my blood won't keep me peaceful. Tossing my head violently from side to side, I bark at Titania, my words punching the air, annoyed and fiercely fuming inside with vexation. I have had enough. It is obvious that all she cares about is that child. She spends all her time lavishing the kid with her attention, therefore ignoring me. With irritation and animosity, I have to look at her, crowning the boy with flowers and making him all her joy. My face is becoming rigid, my jaw is clamped tight and my teeth are grinding against each other. I have never been that outraged by Titania before in my whole life. My anger is deadlier than magma; it is dangerous and destructive, just like my vengeful words that I insult Titania with. Stressed, I am the hazardous volcano and the boiling hot liquid rock is the anger, flowing through my veins like a raging river of disgust. Quarrelling with Titania, I stand with hands on my hips, while hatred is evaporating, coming through my fuming, red nostrils as steam and smoke. Slowly, I start to lose my temper and feel like winning an argument with her is impossible. However, I will not give up until I get my way. The changeling child will be my servant and I will prove to Titania that I am more powerful than her. You shall wait and see.....

**Oliwia Gadzina**

# Geography

## Geography

What a busy term! So much going on in every year group in Geography.



Year 7 have made an excellent start to their studies at St Anne's and have been looking at "Our Place", a topic designed to explore what our country is like and how we perceive it. We have also looked at our personal geography and their homework in the first part of the year was to create a burger box showing their special place. The quality of the boxes was outstanding and a competition has been held to award prizes to the top three boxes of the year. Certificates and prizes are on their way!



Year 8 started the year shaking, rattling and rolling with the topic of Tectonic Hazards. The highlight this term was a trip to The Natural History Museum in October. We took the whole year group to London and had an amazing time in the Earth Galleries of the museum. Students enjoyed travelling through the centre of the world to explore how volcanoes are formed and how we measure them; they

were shaken in the earthquake simulator and were able to gasp in awe and wonder at the displays of precious gems and jewels on display in one of the galleries. The main suggestion for us to improve the trip for next year? Students have asked for more time in the museum!

Since half term Year 8 have been studying the role of geography in sport, exploring fair trade issues and development through sports equipment manufacture and locational geography of football stadiums. Lots of decision making and excitement was generated with the "Trading Trainers" game and students really understood the complex issues of poverty connected with the production of cheap goods.



Year 9 started the year with an exploration of China. We covered a wide variety of different topics from the natural landscape and population distribution to controversial topics such as China's One Child policy and The Three Gorges Dam. Students produced some excellent HSP. They were asked to design a Grand Tour of China and the quality of the work was excellent. Since half term things have got decidedly more chilly as we have been investigating how ice shapes the land. This has been a very "hands on" course with lots of modelling with plasticine and demonstrations using flubber to explore how glaciers move and shape the land.



This year we ran a book covering competition with KS3 students and the quality of the books was significantly better than last year! So many students had clearly taken a lot of time and effort to create some really imaginative designs.



The competition winners will receive their certificates and prizes in assembly time.

GCSE students have also been working really hard this term. Year 11 completed their controlled coursework. This is worth 20% of their final GCSE grade and many have scored excellent results. We are now finishing the course so that there will be plenty of revision time in the run up to the external exams in the summer. Year 10 have been concentrating on population studies and have just embarked on Tectonic hazards.

Year 12 and 13 went out on a combined fieldwork day in October to study both ecosystems and rivers. It was a beautiful sunny day and all groups were able to collect a lot of very reliable data to study on return to the classroom. Students had a great time getting into the Lymington River to collect data about river flow and characteristics and we also found time to run several duck races and a game of Pooh Sticks - all in the name of measuring river velocity!





## Music Department

On Thursday 1<sup>st</sup> October, St Anne's school choir performed in the '7 weeks of Worship' event in Guildhall Square. The event was to raise money for 'Relase', a charity that aids persecuted Christians around the world. It was a wonderful experience to see students from another school perform and for them to perform our own pieces. We worked very hard in rehearsals for this event and sang 'The Lord is My Shepherd', 'Ukuthula', 'Here I am to worship' and the prayer from 'Hansel and Gretel'. Alan Whitehead, our local MP was present to answer questions. Everyone really enjoyed performing to the local community and we had very positive feedback from our audience.

### Instrumental Results Summer 2015

Sejal Kumar	Piano	Grade 1	Merit
Belle Allan	Piano	Grade 2	Merit
Isabelle Lawes	Piano	Grade 4	Distinction
Isabelle Lawes	Violin	Grade 2	Merit
Hannah Douglas	Violin	Grade 5	Distinction
Isabelle Lawes	Flute	Grade 4	Pass
Tanya Watson	Flute	Grade 3	Distinction
Rebecca Trollope	Flute	Grade 4	Merit
Alice Fowler	Singing	Prep Test	Passed
Bo Maguire-Smith	Singing	Prep Test	Passed
Anna Swindell	Singing	Prep Test	Passed
Ee-Lyse Ship	Singing	Prep Test	Passed
Isabelle Lawes	Singing	Grade 1	Distinction
Eunice Sayson	Singing	Grade 1	Pass
Bethany Howard	Singing	Grade 1	Merit
Laura Travers	Singing	Grade 1	Pass
Daljit Soomal	Singing	Grade 1	Merit
Samantha Daarol	Singing	Grade 3	Pass
Emily Eldridge	Singing	Grade 3	Pass
Belle Allan	Singing	Grade 5	Merit

Congratulations to all these girls and to everyone who has taken instrumental exams recently!

## Year 7 Informal Concert

Well done and thank you to all the performers in the Year 7 informal concert in November. Several students performed solos to parents, friends and staff. They have worked very hard in their instrumental lessons and it was a pleasure to hear them perform.



# We are all members of a great club...

## St Anne's PFA!

Thousands of students have benefitted from the fundraising our fabulous Parents and Friends Association are involved in every year. You may have contributed with a donation or by buying refreshments at a Parents' Evening or a strip of raffle tickets at the School Concert. Thank you very much for your support.

The PFA have raised money for a variety of projects including the creation of the Performing Arts Centre and the purchase of a school mini bus - these projects wouldn't have happened without their enthusiasm and determination.

Now we have a new project to aim for in 2016, and we need your help to make it happen. We have a space ripe for refurbishment next to the netball courts, outside House 3. We have cleared the space and plan to create a covered area for girls to sit and relax at break and lunch times. We will involve pupils in the design of the space and aim to raise a contribution from the PFA of £15,000 to the cost of the project.

We could raise.....

£11,500 if 500 families each bought a 500+ Club token

£1,000 from raffles at the School Production and School Concerts

£1,000 from pupil and parent stalls at the Summer Bonanza

£2,000 from sales of refreshments at school events

We need your help! You could contribute in many different ways, donating your ideas, time, money or skills. We particularly need someone to be a.....

**Raffle Champion and Team:** Raffles are very good fundraisers and could be even more lucrative if we had a team to work on making our raffles unmissable!

**Summer Bonanza Stallholder:** The Summer Bonanza is planned for Saturday 9<sup>th</sup> July 2016 and has great potential as a money-spinner. You can help by running a stall or helping with refreshments.

We also always welcome anyone who can give an hour or two to help the refreshments team at evening events, so if you think you can help please complete the form overleaf and return it to School Reception addressed to the PFA or complete the form which will be available on the PFA page of our new website

We look forward to seeing you,

Lyn Bourne, Chair of the PFA



# We would like to support St Anne's

Name of Student:

Tutor Group:

Name of Parent(s):

Email Address:

Tel. No:

I/We would like to:

👑 Join the 500+ club and have completed the form overleaf

👑 Be the Raffle Champion

👑 Join the Raffle Team

👑 Run a Summer Bonanza Stall

👑 Help the Refreshments Team



St Anne's Catholic School & Sixth Form College



*As a St Anne's PFA member...*

*Your contribution makes*



*a difference to our school.*



*Let's work together to make*



*a difference for our girls!*



# 500+ Club

A lottery club with the sole aim of raising money for projects and new equipment to benefit the pupils at St Anne's - *and it is **a great way of supporting the School!***

There is a monthly draw to win **£25** and 2 bonus draws of **£50** at Christmas and at the Summer Bonanza. Each token costs £24 for the year (or £6 quarterly) that's just **£2 per month** to support the school.

Name(s) .....

Address .....

.....Post Code.....

Tel No ..... Email..... Date .....

Daughter's Name(s) .....Year and Tutor Group.....

Number of lottery tokens you would like to purchase @ £24 each per year ☐  
(to be entered in to 14 draws per year)

When your number/s come up would you like the cheque sent home;

with your daughter ☐

by post ☐

If you are happy for us to publicize your winning draws in the school newsletter, please tick here ☐

Cheques are payable to "Parents and Friends of St Anne's 500+ Club. If you would like a standing order form, please e-mail to the address below

Please return form with cheque/cash or standing order mandate to 500+ Club, via St Anne's School Reception or scan & email to: [elodiesiney@gmail.com](mailto:elodiesiney@gmail.com)

**Thank you for your support 😊**

# Parent Voice

## Parent Responses to Parent Evening Questionnaires 2014-2015

As in previous years, we have gathered the views from parents through parents evenings. A box is left at the main reception for parents to complete on their way in or out of the evening. We have then posted home questionnaires to those parents who did not attend the evening. In this way, every parent in the school has the chance to have their say about the school.

This year, we had 221 responses, which is 20% of the school community.

### Happy, Healthy and Safe

Year	2013	2014	2015
My child is happy at the school.	97%	97%	98%
My child feels safe at this school.	99%	97%	99%
This school deals effectively with bullying.	91%	90%	95%
This school makes sure its pupils are well behaved.	96%	91%	94%
My child is well looked after at this school	99%	96%	99%

### Learning

Year	2013	2014	2015
The school informs me about my child's progress.	95%	92%	96%
My child makes good progress at this school	95%	95%	98%
My child is taught well at this school.	96%	96%	100%
My child receives appropriate homework for their age.	94%	89%	95%

### Overall

Year	2013	2014	2015
This school is well led and managed.	97%	96%	98%
This school responds well to any concerns I raise.	93%	91%	97%
I would recommend this school to another parent.	95%	96%	96%

The positive responses remain very high and some have increased from 2014, such as effective responses to bullying and how well parents say their child is being taught.

There were lots of positive comments from parents, some examples:

- This school is fantastic, I have long wondered where all the happy teachers go; now I have found them.
- The school has taken good care of Millie especially when I was admitted to hospital. They have helped her gain confidence which I feel is half the battle to her realising her potential.
- Thank you for your hard work and support of my daughter.
- School is well managed, students are well taught.
- We are very pleased with St Anne's.
- Well informed Parents evening.
- Very happy with the school and my child's progress.
- St Anne's has made a real difference to our daughter.



# Student Leadership Programme

Overseen by our excellent Head Girls, the student leadership teams have risen to the challenge of leading the school in a range of ways this term.

There are over 250 elected student leaders in the school forming 4 key groups of elected teams. Elections took place at the start of the academic year. The other teams are either self-elected (the Learn to Lead teams and leaders of extra-curricular activities) or apply for the position and are interviewed (Year 11 Prefects).

## **House Leadership Teams**

These teams meet monthly and are made up of the sixth form House Captains, and the form and vice representatives from each tutor group. Their objective is to lead House activities such as House assemblies, charity events and to help raise the identity of their House within the school. It has been great to see House Captains leading teams of Year 7-11 pupils, and how they are working together to raise money for their chosen charity and in jointly leading their House Assemblies.

## **Student Voice Teams**

These teams meet with members of the senior staff termly to give their views and the views of their tutor groups on aspects of school life and to inform the school and student leadership teams on what students are thinking about school life. Their first meeting was this month, where students shared their tutor group's thoughts on how the school promotes Equality of Opportunity and Fundamental British Values.

## **Chaplaincy Rep Team**

This team have been working with the staff Chaplaincy team to promote the spiritual life of the school. The new stained glass windows that each tutor group is making are going to be displayed as we go to press.

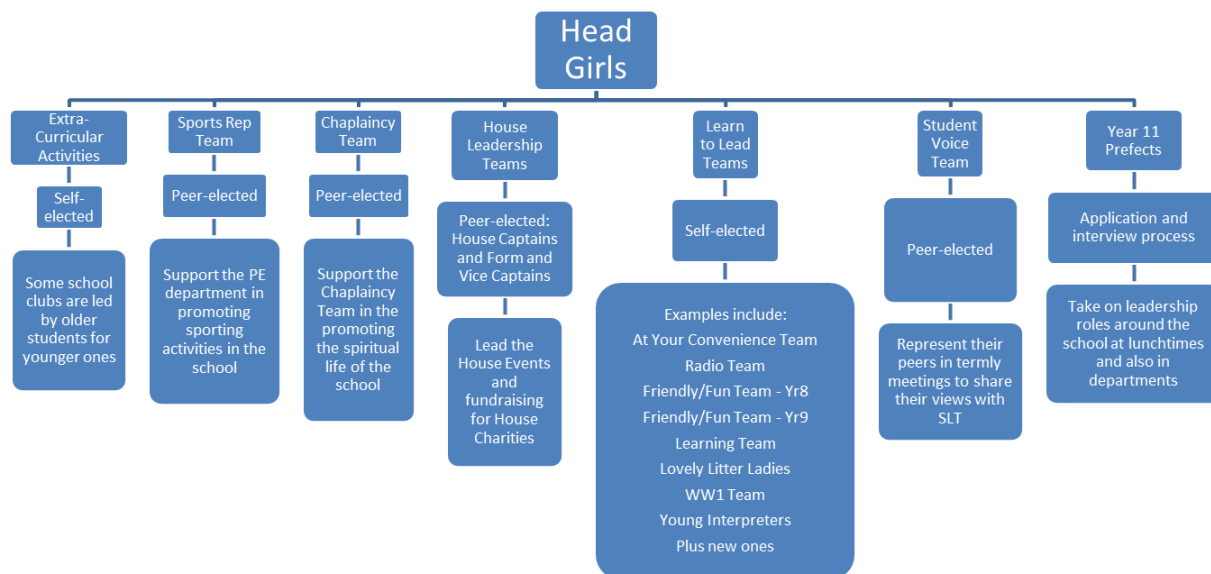
## **Sports Rep Team**

The team support the PE department in promoting the sporting life of the school. It has been great to hear about the sporting successes of the school already this term!

## **School Council Meetings**

These happen termly and the first of the year was at the start of December. All of these teams and others were represented and got to hear what each other have been up to this term and what

they plan on doing next term. Members of the school senior leadership team and Governing Body were in attendance to hear their progress.



Photos of the some of the representatives sharing their team's stories at the first term's school council meeting.



# Changes to GCSEs

From September 2015, pupils in year 10 will begin to take new reformed GCSEs. Pupils in Year 11 are not affected as they began their GCSEs in September 2014.

The first new GCSEs to be taught from September 2015 will be in English language, English literature and maths. New GCSEs in other subjects will follow in September 2016 and 2017.

The first assessment of the new GCSE courses that start in September 2015 will be in June 2017.

## What are the key features of the new GCSEs?

The Department for Education (DfE) has made a number of changes to the characteristics of the new GCSEs.

Key features include:

- A new grading scale that uses the numbers 9-1 to replace the A\* - G scale for identifying levels of performance
- 'Untiered' test papers in most subjects, where students will sit the same test papers at the same level regardless of ability. Some subjects, such as maths, will be tiered where untiered papers do not allow lower ability students to demonstrate their knowledge and skills or do not stretch the most able
- Students will be assessed at the end of the course and subject content will not be divided into modules
- Assessment will be made by external exam, except where non-exam assessment is the only way to assess certain skills
- Students will only sit exams in the summer. Students will only be able to resit exams in November for English language and maths if they were at least 16 on the preceding 31 August.

## How is the new grading scale different?

The new GCSEs will be graded using the numbers 9-1, with 9 being the highest and 1 the lowest.

Where performance is below the minimum required to pass a GCSE, students will receive a U.

The new grading scale will be used for the first time at the end of the new GCSE courses in English language, English literature and maths in 2017.

The chart below compares the new GCSE grading structure to the one currently used for the old 'legacy' GCSEs. For example, a C sits between a 4 and 5 in the new grading structure:

NEW GCSE GRADING STRUCTURE		CURRENT GCSE GRADING STRUCTURE
9		A*
8		
7		A
6	<div>GOOD PASS (DfE)</div> <div>5 and above = top of C and above</div>	B
5		
4	<div>AWARDING</div> <div>4 and above = bottom of C and above</div>	C
3		
2		D
1		E
		F
		G
U		U

Source: New GCSE grading structure, GOV.UK - Ofqual

## FAQs

***My daughter is in Year 10. How will she be assessed in her GCSE subjects in the summer of 2017?***

In English language, English literature and maths, your daughter will be graded using the new 9-1 grading structure in 2017. In any other subjects your daughter takes she will be graded using the A\* - G grading structure in 2017.

***My daughter is in Year 9. How will she be assessed in her GCSE subjects in the summer of 2018?***

Your daughter will be graded using the new 9-1 grading structure in the core subjects (English language, English literature, maths, religious studies and the sciences), the EBacc subjects (history, geography and languages), and some other subjects (art, drama, dance, music, GCSE PE, computer science and food preparation and nutrition).

In any other subjects your daughter takes she will be graded using the A\* - G grading structure.

As your daughter starts her GCSE course in Science in Year 9, her target, challenge and current attainment grades have been changed to reflect the new grading system.



### ***Are the new GCSEs going to be more challenging?***

Yes, the government explained that one of the main reasons why GCSEs are being reformed is to make them more challenging. For example, the new English language GCSE will require better reading skills and good written English.

### ***When will all of the new GCSEs be introduced?***

The last batch of new GCSEs will be introduced in September 2017. Therefore if your daughter is in Year 7 or Year 8 in September 2015, she will sit all new GCSEs graded 9-1.

### **Where to go for more information**

#### **Contact the school**

If you have any questions about the changes to GCSEs and how this will affect your daughter, please speak to her subject teacher or Head of Year.

#### **External links**

The government explains its reasons for reforming GCSEs in appendix 4 of a policy paper linked to below:

- **2010 to 2015 government policy: school and college qualifications and curriculum**, GOV.UK - DfE <https://www.gov.uk/government/publications/2010-to-2015-government-policy-school-and-college-qualifications-and-curriculum/2010-to-2015-government-policy-school-and-college-qualifications-and-curriculum>

Ofqual regulates qualifications, examinations and assessments. It provides more information about the changes to GCSEs and the new GCSE grading structure:

- **New GCSE grading structure**, GOV.UK - Ofqual [https://www.gov.uk/government/uploads/system/uploads/attachment\\_data/file/435615/2015-06-16-postcard-new-gcse-grading-structure.pdf](https://www.gov.uk/government/uploads/system/uploads/attachment_data/file/435615/2015-06-16-postcard-new-gcse-grading-structure.pdf)
- **Get the facts: GCSE reform**, GOV.UK - Ofqual <https://www.gov.uk/government/publications/get-the-facts-gcse-and-a-level-reform/get-the-facts-gcse-reform>

The BBC and the NHS provide advice on supporting your child through exams:

- **Helping your child through exams**, BBC [http://www.bbc.co.uk/schools/parents/helping\\_with\\_exams/](http://www.bbc.co.uk/schools/parents/helping_with_exams/)
- **Beat school exam stress**, NHS <http://www.nhs.uk/Livewell/childhealth6-15/Pages/Examstress.aspx>

## Work Experience

A placement, volunteering or work experience opportunity is an excellent way to help someone 'stand out from the crowd'. Getting work experience is a win/win situation, where students gain extra skills and organisations benefit from student input and support. Some students even receive job offers from their employer, proving there can be winners all round.

Taking part in work experience, also known as volunteering, can bring great rewards. Work experience provides the opportunity to learn new skills and improve the skills already gained. It is a chance to help others at the same time and an opportunity for our students to build a better future, making personal discoveries along the way. For these reasons our school believes it is so important for all students to have the opportunity to take part in work experience.

Every November our girls go out on work experience and this year they have just returned from 2 weeks experiencing the world of work. It can be very hard to find placements in today's climate, however yet again our girls have found some interesting and imaginative placements. Year on year most of the girls stay in and around Southampton, however 1 student travelled all the way to Scotland staying away from home as part of the challenge.

Every year we are well supported by our local community where placements are supported in local schools, nurseries, shops, restaurants, care homes, hairdressers, doctors and the Southampton General Hospital.

We are continuously grateful for the support we receive as a school, here are just a few of the tasks undertaken this year:

Assisting Vets and animal healthcare profession	Working with young children and teachers	Helping to organise a children's party, dressing up as a character for the party
Making displays and fundraising for charity	Helping with photoshoots and film processing tasks	Undertaking different administration tasks
Taking tours round a school and leading teaching sessions	Working in different departments at the hospital	Constructing window displays
Stock control	Helping with tasks in a chemist	Attending child development course and designing relevant leaflets
Caring for animals in a kennel/cattery	Taking part in various tasks in local hotels	Working for a newspaper
Baking festive products to be sold in the shop	Product testing	Working in a busy coffee shop
Customer service	Marketing properties for sale	Translating for customers

Along with the above however, we also had some very demanding placements. One of our students actually accompanied a Policeman 'on the beat' even witnessing an arrest. Whilst another student was

working for a solicitor in Bedford Place, also dealing with the law but from a different perspective. We also had a few girls working in hotels during the 2 weeks where they learned about what is involved when running a hotel, one of the girls even travelled to Scotland for the privilege.

Through this experience of the world of work, St Anne's is helping to develop the leaders, lawyers, chefs, teachers, vets, hairdressers, doctors, artists and IT specialists of the future to name but a few. Our girls have shown amazing potential and have been given some outstanding feedback by employers.

This year has been another excellent year for work experience and already more than 10 girls have been offered references and part-time jobs when they are old enough. The feedback about our students has been wonderful to read and definitely makes the job of work experience very worthwhile. All the girls this year need to feel proud and impressed with their achievements and the fact that they have proved they are excellent advocates for the school.

With this in mind it seems appropriate to share some of the outstanding comments from employers so far:

- The best work experience student we have ever had, it was easy to mistake her for one of the permanent members of staff
- Was shy at first but then really came out of her shell, uses initiative and does whatever is asked of her. Will be sorry to see her go!
- Very impressed with their attitude and how hardworking they are " absolutely outstanding"
- So impressed by her, that I have written to her parents so they can feel proud too
- It has been a pleasure having her in our school, she is welcome back any time
- Even prepared to work through her lunchbreak which is commendable

As a school we firmly believe work experience is a very important aspect of our pupil's education. This opportunity helps the student to gain and build self-confidence, learn how organisations work, experience working in a team or alone, learn new work processes and develop skills as a successful worker. It will also enable students to understand and sample possible career options and provide valuable evidence for sixth form, college, university and/or future work applications.

Two weeks spent in the world of work, or a fortnight that could completely change your life. Work experience can be either of these and that is why St Anne's will continue to provide this valuable opportunity for our students.

***Sharron Ward***

***Work Related Learning & Careers***

## Year 7

It has been a fantastic term for Year 7, full of wonderful events and activities. We started the year getting to know each other at the House Parties and the Year 7 Social Event which were hosted by the Head Girls and House Captains. Pupils were welcomed into the community of St Anne's at the Welcome Mass at St Edmund's and we have enjoyed two fantastic Curriculum Enrichment Days. We finish the term by celebrating the achievements already made by Year 7 pupils this term.

Becket, Bede and Campion have created and delivered their assemblies to the year group demonstrating their ability to work as a team, express a message from the Bible and present an informed reflection to their friends and tutors. We were treated to wonderful plays to tell stories from the Bible, and beautifully written prayers, all created by the tutor groups.

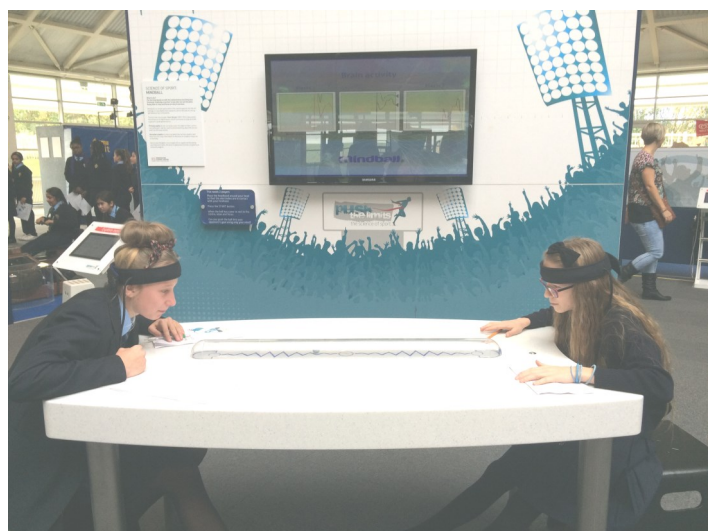
Our Curriculum Enrichment days were full of fun and our Year 7 girls were able to participate in a range of activities. We celebrated our faith with a Reflection day at Testwood Baptist Church. The pupils decorated crosses, played parachute games to learn about each other, completed crafts and undertook the CAFOD refugee simulation activity to fully understand the devastating plight of the many refugees currently in crisis. The day was enjoyed by all and the refugee simulation activity had a very profound impact.

In November we visited the Winchester Science Centre and Planetarium. We enjoyed experimenting with the exhibits including an air canon, merging faces with a friend by manipulating light levels and building enormous towers with K'nex. The highlight of the day was most certainly the planetarium screening. We were whisked off to far reaching galaxies and explored the furthest planets of our solar system finding out about the treacherous storms of the gas giants and the prospect of water on Mars. The beauty of the worlds beyond our own was truly breath-taking.

It has been a pleasure welcoming Year 7 into the life of St Anne's and seeing them settle, make new friends and feel a part of the school community. I hope that they continue to work hard in the New Year and take full advantage of all of the wonderful opportunities St Anne's has to offer.

Lisa Taylor

Acting Head of Year 7





## Year 8

Year 8 pupils here at St Anne's have made an impressive start to the academic year. Pupils have been involved in two fantastic curriculum enrichment days this term, the first was a fun filled day to The Natural History Museum in London, students all looked very smart and I was very proud of their behaviour. I received several comments from members of public saying how polite our girls were which was delightful to hear. The focus of the day was to explore the geographical areas of the museum, students particularly enjoyed the 'Earth Lab' and 'Volcanoes and Earthquakes' floors. The earthquake room was very popular, many of our girls visited the room several times to witness what it would be like to be in an earthquake. I would like to thank Mrs Monk and the geography department for running this trip, it was a fantastic day out for all our girls and I am sure they will remember it for a long time.

Our second curriculum enrichment day was split into two parts. The morning sessions were led by the chaplaincy team and focused on 'the bigger picture'. Pupils were challenged to look beyond themselves and question what is important in their lives. Pupils were taken on a journey as a refugee and were asked to think of which possessions they would **want** to take vs which possessions they would **need**. The afternoon focused on personal safety. Pupils explored road safety, safe friendships and self-defence. Pupils thoroughly enjoyed the practical element of self-defence which was led by the fantastic British Taekwondo coach Joe Brown.

Overall the Year 8's have had a really positive autumn term, with many girls having fantastic academic reports, lots of girls taking part in extra-curricular activities and many joining in with and starting up new Learning to Lead teams. I have been very proud to witness the maturity in which you have all grown both socially, emotionally and academically over the first 15 months at secondary school. This time last year you had only just completed your first term and now you are well on your way to becoming motivated, independent and caring young ladies who are a credit to the school. I hope your positive attitudes continue throughout the rest of this year and I look forward to the many adventures 2016 will bring us.

Miss Thompson, Head of Year 8



## Year 9

This Autumn Year 9 girls have had two fantastic Curriculum Enrichment days which have included working in teams to create a dance, art work, short drama and a musical performance. Our girls were creatively thinking and designing ways to deliver a message to others on 'Global Values'. At the end of the day the year group gathered together to watch performances from all the different teams. It was a joy to watch the girls confidently perform in front of their peers and staff, some drama performances made us laugh whilst still delivering a strong message and there was a fantastic whole group performance of Bob Marley's 'don't worry about a thing'.

For our second Curriculum Enrichment day the Year 9's had three different sessions in the morning focusing on personal safety. Students learnt about internet safety, they were very fortunate to have a session delivered by Barnardo's and a fantastic session from Joe Brown (British Taekwondo) on self-defence. The self-defence session was a clear hit with our girls. All students participated and learnt some basic moves, understood when is the right time to use them and why it is important to be able to defend yourself. It was lovely to see such a buzz from our girls!

We had a fantastic afternoon with the RE and Chaplaincy department, our reflections afternoon was challenging the girls to be self-reflecting and thinking about 'who is behind their mask' as well as offering the students to find an inner peace whilst having a calming meditation session. We finished our day with a whole year group Liturgy.

Different tutor groups have helped to lead our assemblies this term, offering creative and reflective collective worship for our year group. I have also been very impressed with several students who have been readers in assemblies, these girls have spoken clearly and confidently. Our girls have also attended a wonderful service at St Edmunds Church for their Year 9 Mass and represented our school beautifully!

Well done to all Year 9 students for such a positive term, I am looking forward to continuing in the same direction in the spring.

I wish you all a wonderful Christmas break!

Miss King , Head of Year 9





## Work Experience

Year 10 pupils have just returned to school after a very successful two weeks of work experience. The girls have been involved in a range of different work places and industries; from nurseries and bakeries to veterinary practices and the police force. Some students even travelled the breadth of the United Kingdom, working as far as Scotland, Chesterfield and London!

The students have been excellent ambassadors for St. Anne's during their placements, and the school has been overwhelmed with positive comments about their well-mannered and hard-working demeanours. Some students impressed their employers so much that they have been hired for jobs over the Christmas period!

We hope that the girls enjoyed their time on work experience and that they will be able to apply their new found skills to accomplishing the next set of challenges that they may face.

## Pensioners' party

The Year 10 students have also been busy preparing for the Pensioners Party which took place in the hall on Friday 4<sup>th</sup> December. Approximately 60 Pensioners attended the party where there was a range of festive games and performances, which are all planned and run by our students. The students worked tirelessly in their tutor groups to create decorations, wrap presents and write cards in preparation for the day. This was a great chance for the tutor groups to work collectively as a team, whilst also contributing towards the wider community.

Well done to all of Year 10 on a great first term; I look forward to seeing this continue into the New Year. I would like to wish all pupils and their families a very happy and restful Christmas.

Best wishes,

Miss Stringfellow, Head of Year 10





## Year 11

Year 11 have certainly started the year as they mean to go on. After half term break they returned to immediately face their Pre Public Examinations. These examinations not only help staff to identify the current levels of attainment for the students but also proved a real indicator for the girls as to how the exam period would work. The girls behaved impeccably throughout this process and all worked extremely hard. On behalf of the staff I would like to thank the girls and congratulate them on their maturity through a stressful and tiring time, well done ladies.

On Friday 11th December we held a 'mock' examination results day. We have high hopes that the behaviour and attitude which the girls have displayed throughout this time will transfer successfully in to the Summer.

As always we are extremely grateful to Mrs Bellows, our examinations officer who is always there to give her advice and support to the students when needed and to Mrs Kent our welfare officer who provided a friendly face for the girls who were feeling anxious.

Curriculum Enrichment Day on Monday 16<sup>th</sup> November was another success for Year 11. Girls were given time to work on specific areas which staff felt most suited the individual child. We had girls working in our English, Maths and DT/Textiles departments as well as girls tasked with independent study. All girls really benefited from this day and a similar targeted study and intervention plan will be put in place again in March.

After the Christmas Break there will be a full programme of revision which your daughter is welcome to attend. We ask that you support us with this and encourage her to take advantage of these to maximise her full potential when we reach the all important exam period in the Summer.

We also have the Prom to organise and look forward to in the Summer. It is important that the students get an equal school work/life balance and they keep well through what is the most important year of their lives to date. I will be looking for applicants to sit on the Prom committee shortly after Christmas.

With such a busy time ahead I hope that you all find time to reflect and relax and have a peaceful and restful Christmas.

Mrs Trueick, Head of Year 11



## Sixth Form

### Y13 Interview Day

As preparation for higher education and employment our Year 13 students participated in a day focused on their interview skills. A variety of professional people from around the local area kindly gave their time to conduct mock interviews. Professions including law, medicine and accountancy were represented and this gave our students invaluable experience at coping with these challenging situations. The result was a highly informative day that allowed the students to reflect on personal skills and also develop their application to university.



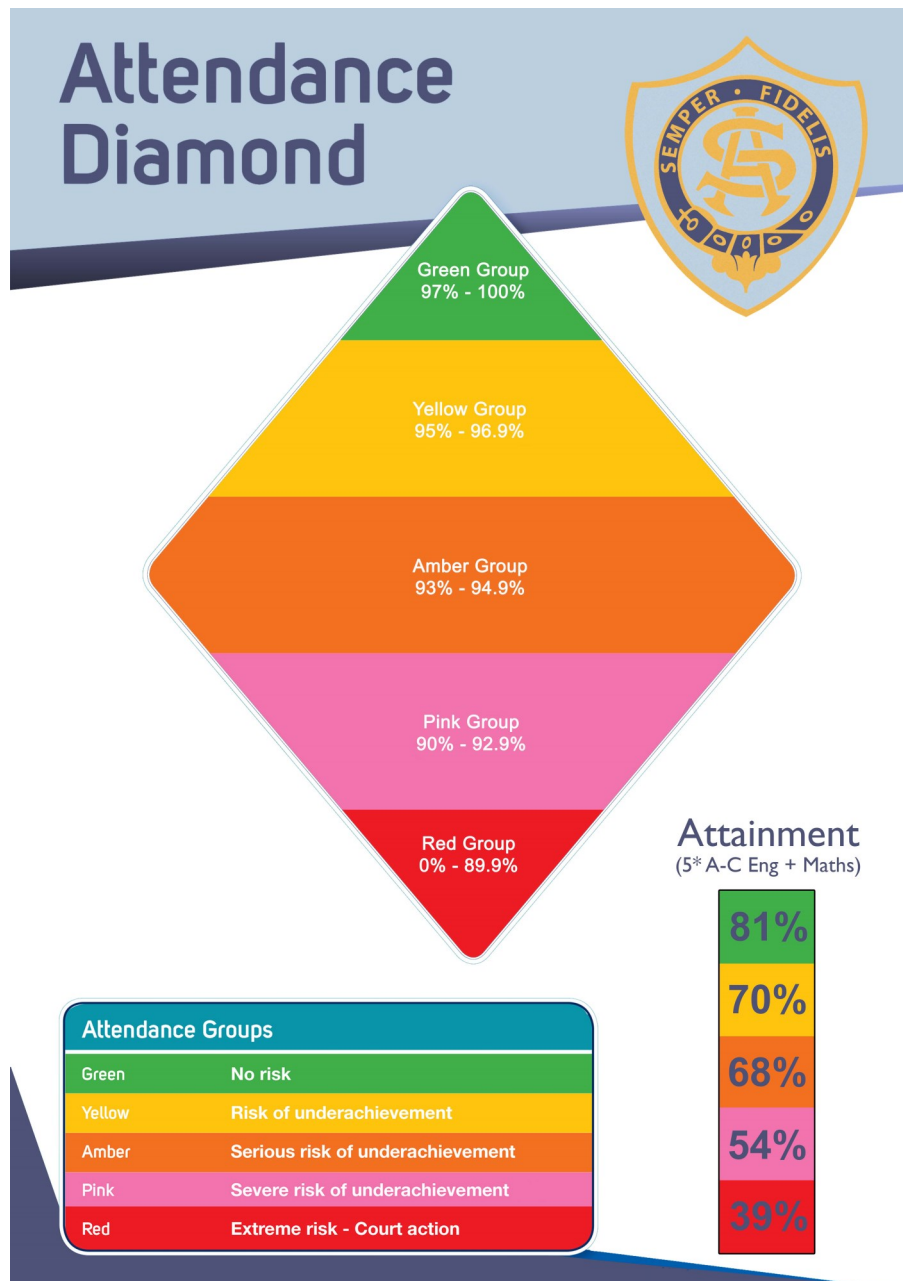
### Year 12 visit to Woodmill Outdoor Activities Centre

Year 12 visited Woodmill Outdoor Activity Centre for the enrichment day on Thursday 15<sup>th</sup> October and took the opportunity to bond and learn teamwork and leadership skills. The students participated in events that included: Archery; the tunnel, where students bravely crawled through a 50 metre pitch black tunnel; crate stack, which was a challenge of teamwork and strength as they attempted to make the largest stack of crates possible, with the help of a system of ropes and pulleys and the climbing wall.



# Attendance Matters

Thank you to all parents for helping to improve attendance at St Anne's this term. We currently have 96.4% attendance which is well above the national average of 94.8%, however our school target is 97% attendance. Please can we ask that you continue to support your daughter's education by ensuring they attend school. As you can see from the diagram below, attendance and achievement is linked so the better the child's attendance, the better the child's attainment should be.



Regular attendance is not just a legal requirement, but it is vital for pupils to maximise their learning, and achieve full potential here at St Anne's Catholic school. There are a number of important steps that you can take to ensure your child maintains a high level of attendance:



- Only one day of absence will be authorised for Eid as agreed across Southampton schools.
- Ensure your child attends every day, on time, equipped and ready to learn. Tutor time begins at **8.40am** so your child is expected to be on site prior to the bell for tutor time.
- Ensure the school has up to date addresses and telephone numbers. We will contact you by text through parent mail or by telephone if your child is absent and you have not contacted the school. This ensures that truancy is quickly identified.
- If your child is ill, contact the school and provide an explanatory note on their return to school. Please make sure you telephone school every day your child is absent.
- If no contact is received regarding the absence, it is recorded as **unauthorised**. Ultimately the school is responsible for deciding if the absence is acceptable or not. Only genuine absence will be authorised. You will be asked to provide medical certificates if your child has a poor attendance record.
- Ensure that medical appointments are made outside of school time.
- Avoid trivial absence such as, 'buying new shoes'. This would not be accepted as a reasonable absence.
- Holidays should **not be** taken in school time. Holidays will **not be** authorised during term time.
- Respond to school letters or telephone calls regarding attendance and punctuality.
- Contact your child's tutor or Head of Year if you are experiencing difficulty in getting your child into school.

Thank you for working in partnership with us to achieve the highest possible levels of attendance and punctuality at St Anne's Catholic School.

To illustrate the importance of punctuality and excellent attendance, please see the table below to see how every minute counts:

If your child is...	Days of Education lost in a year
5 minutes late	3 days
10 minutes late	6.5 days
15 minutes late	10 days
20 minutes late	13 days
30 minutes late	19.5 days

This table illustrates how percentages equate to the number of days absent:

95% attendance	10 days absence
90% attendance	20 days absence per year
85% attendance	30 days absence per year
80% attendance	40 days absence per year (1 day per week)

## Letter to Parents

### The Prevent Duty

I am sure over the past year, parents have become increasingly aware of issues surrounding radicalisation and extremism. We see in the media many examples of terrorism that are a concern to us all within our communities.

The government has placed a legal duty on schools to be vigilant with regard to radicalisation and extremism; this duty is known as the Prevent Duty. The Duty is one part of the government's Counter Terrorism Strategy in which staff are seen as frontline members. We wish to inform parents that they too play a key role in safeguarding their children. It is vital that parents monitor the use of the internet at home so that they can be sure their loved ones are safe. Therefore please ensure that you have filters and/or monitoring software in place.

We have placed a leaflet on our website for further information. Please click on to 'latest information' The Prevent Strategy.

The government have indicated that teaching Fundamental British Values is statutory. We therefore continue to deliver this through assemblies, curriculum enrichment days and throughout the curriculum.

Finally, if any parent is concerned about their child in relation to radicalisation and extremism, please do contact me for support.

Mrs Barrett-John

Senior Deputy Headteacher

## Uniform

We would like to thank Parents for their continued support with regard to uniform. We draw your attention to shoes and ask that parents are not pressurised by the girls into buying black trainers or canvas shoes which seem to be the fashion. The uniform code is clear, black leather shoes should be worn and we urge you to review further with your daughter. Pupils will be asked to remove unsuitable footwear in school.

Mrs Barrett-John

Senior Deputy Headteacher



## Dates for your Diary

### **January 2016 - Spring Term**

Monday 4th January:	Beginning of the new school term Sixth Form Assessment Fortnight begins
Monday 18th January:	Young Musician heats 3.45pm - 5.00pm in Room 18 Performance of Vivaldi's "Gloria" St Mary's Church at 7pm
Tuesday 19th January:	Year 11 parents' evening 4.30pm - 7.30pm
Wednesday 20th January:	Southampton Schools Cross Country Championships Year 7 & 8 from 2pm
Friday 22nd January:	Staff Development Day—School Closed to Pupils
Monday 25th January:	Young Musician semi final 3.45pm - 5.30pm in room 18
Wednesday 27th January:	Young Musician final 6.00pm - 8.00pm in the Hall
Thursday 28th January:	Tea with Headmistress KS3 Parents 3.30pm - 4.30pm

### **February**

Tuesday 2nd February:	Sixth Form parents' evening 4.30pm - 7.30pm
Wednesday 10th February:	Ash Wednesday services in the Hall Lent Charity Events begin
Monday 15th February:	Half Term begins
Tuesday 23rd February:	Year 11 Pre Public Exam 2
Wednesday 24th February:	Year 10 Pre Public Exam Year 9 KS4 Curriculum Evening 6.00pm - 8.00pm
Monday 29th February:	Year 10 Pre Public Exams

### **March**

Thursday 3rd March:	World Book Day
Monday 7th March:	Curriculum Enrichment Day 3
Wednesday 9th March:	Sound of Music School Production 7.00pm - 9.00pm in the Hall
Thursday 10th March:	Sound of Music School Production 7.00pm - 9.00pm in the Hall
Friday 11th March:	Sound of Music School Production 7.00pm - 9.00pm in the Hall
Thursday 17th March:	Tea with the Headmistress KS4 and Sixth Form Parents 3.30pm-4.30pm
Friday 18th March:	Year 12 UCAS Fair
Wednesday 23rd March:	Easter Concert 7.00pm - 9.00pm in the Hall
Thursday 24th March:	Early Closure 12.30pm
Friday 25th March:	Ski Trip begins